

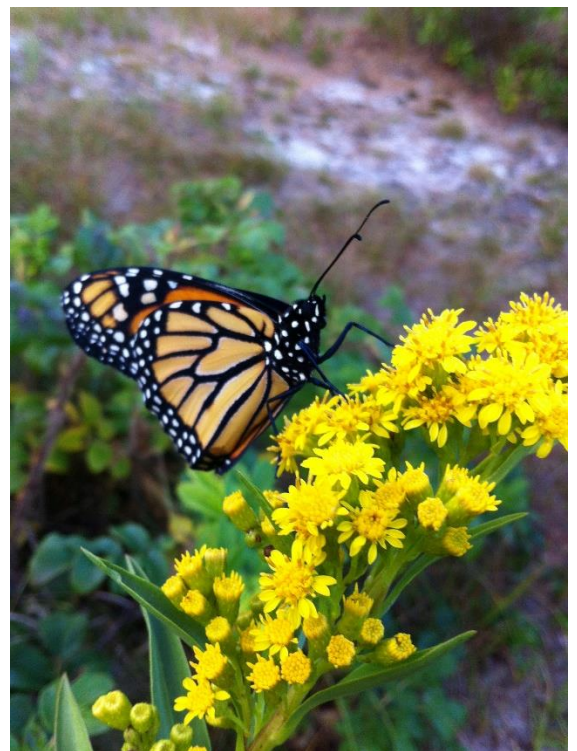


Welcome to Pollinator Party! In this class packet you'll learn about what pollinators are, how they help plants, and what types we have on Nantucket! Activities will include nature discovery, games, and crafts! If you pick up this packet in-person at the LLNF at 110 Eel Point Rd, then all materials will be provided in the packet. **Everything in the bag is yours to keep, please do not return anything to the pick-up box.**

You can also download this packet from our website and follow along with the instructions, even if you are not on Nantucket, but you'll need to provide your own materials.

Activities included:

- What is Pollination?
- Pollinator Scavenger Hunt
- Pretend Pollinator Play (Choose Your Own Adventure)
- Flower and Pollinator Craft



# What is Pollination?

Materials:

- Pollinator Infographic

Instructions:

Learn all about pollinators! Pollination is the process in which a plant becomes fertilized and is able to make a seed. Plant flowers have both male and female parts. The male part, called the anther is where pollen is made. In order to create a seed, pollen must travel from the anther to the pistil, the female part. At the bottom of the pistil are the plants' eggs. Once the pollen touches the eggs, the plant can make seeds. There's a problem however, how does the pollen travel from the anther to the pistil? That's where pollinators come in. These 'helpers' get pollen stuck on their bodies when drinking nectar from a flower. When the pollinators fly to another flower, the pollen falls off, fertilizing the plant! Pollinators come in all shapes and sizes: bees, butterflies, bats, birds, flies, and more! Check out the infographic on the next page for more info!



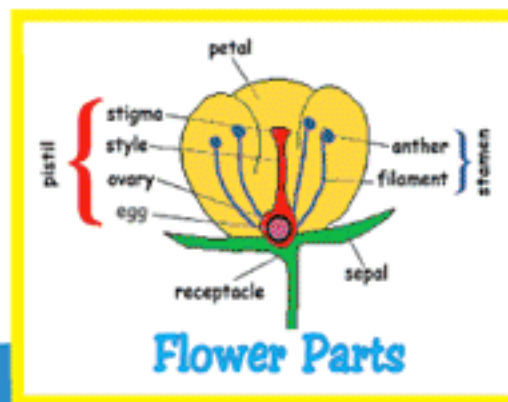


# Pollination

**FLOWERS ARE CLEVER LITTLE INVENTIONS USED BY PLANTS TO MAKE SEEDS.**

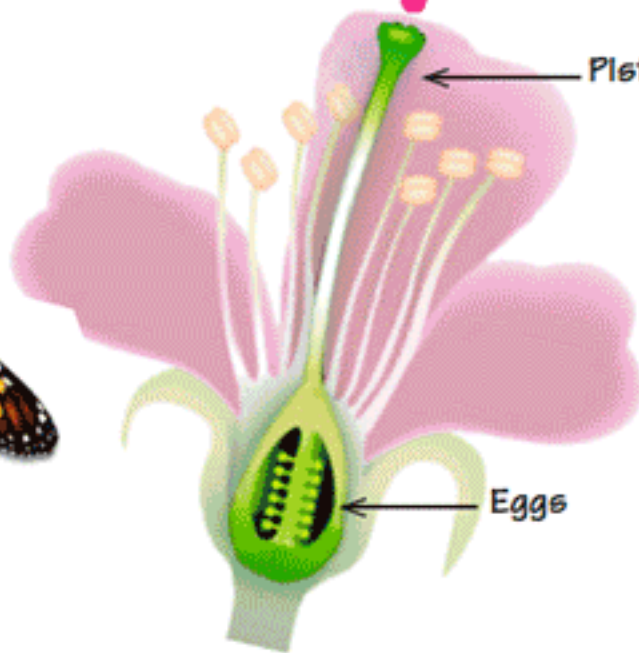
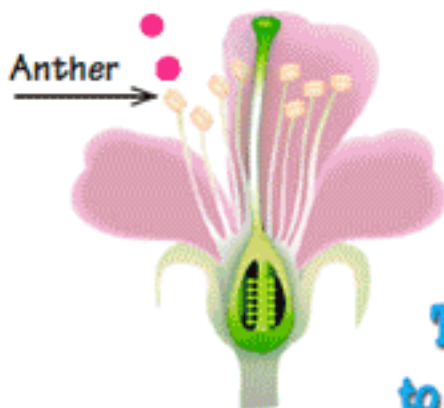


Another part of the plant called the **"pistil"** leads to the **"eggs."**



One part of the flower called the **"ANTHER"** makes pollen.

Anther



To make a seed, pollen has to find its way to the **"pistil"** and travel down to reach the **"egg."** This is called **"pollination."**



This is how it works. One part of the flower called the anther makes pollen. Another part of the flower, called the pistil produces an egg. To make a seed, the pollen has to find its way to a pistil and travel down to reach the egg. This is called "pollination." The problem is ...how do you get the pollen where it is supposed to go?

This is where butterflies, bees, hummingbirds and other "pollinators" come in. When they visit a flower to sip its nectar, pollen gets stuck on their bodies. Then... when they travel to another flower, the pollen comes off onto the stigma of the other flower and the pollen can make its way down to the egg. The pollen joins with the egg and the result is a seed... a baby plant in a protective case filled with food.



**ONCE THE POLLEN JOINS AN EGG, IT BECOMES A SEED. SEEDS GROW TO BE NEW PLANTS**

# Pollinator Scavenger Hunt

## Materials:

- Pollinator scavenger hunt card
- Crayons

## Instructions:

Now that you know what pollination is and which animals are pollinators, go out in nature and try to find the species on the card! You can walk along the LLNF trail as you search or any other nature area if you downloaded the packet online and are following along from home.







Find the piece of nature  
below...or find a clue!

**Pollinator Party Edition!**



Bumblebee \_\_\_\_\_



Fly \_\_\_\_\_



Bat \_\_\_\_\_



Butterfly  
\_\_\_\_\_



Hummingbird  
\_\_\_\_\_

# Pretend Pollinator Play (Choose Your Own Adventure)

## Materials:

- Choose Your Own Adventure Card
- Costumes (optional, but not provided)
  - Feel free to dress up as the pollinator you pick!
- 6-sided die (not provided) or random dice roller ([random.org/dice](http://random.org/dice))
- Character marker (you can use any small object you find; a rock, stick, shell, etc.)

## Instructions:

You are about to set out on an epic quest! Your goal will be to effectively pollinate a flower! Choose your character wisely, each pollinator has special abilities!

## Characters

### Butterfly

- **Advantage:** Fast flight speed (when event says move forward one space, instead move forward two)
- **Disadvantage:** Colorful pattern increases susceptibility to predation (when event says role die to escape from predator, you escape only if you roll a five or a six, rather than a three or higher).



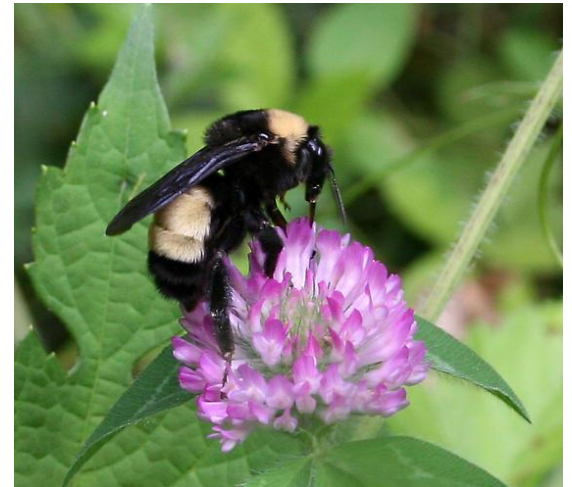
## Bat

- **Advantage:** Can pollinate at night (when an event indicates that it happens at night, only the bat can move)
- **Disadvantage:** Can ONLY pollinate at night, cannot, move during the day (for an event that happens in the daytime the bat must remain stationary)



## Bumblebee

- **Advantage:** Sticky hairs allow for very effective pollination (roll two times each turn instead of one!)
- **Disadvantage:** Slow flight speed (when an event says to move two spaces forward, instead only move one space forward.)



## Gameplay

This game can be played either solo or against other people. If you play solo, your goal is to reach the flower to pollinate it in ten turns or less. If you play against other people, the first person to reach the flower wins.

- Choose your character
- Find a character marker (rock, stick, shell, etc.) and place it on the Start space
- Start gameplay
  - If playing against other people use rock-paper-scissors or some similar method to determine who goes first

- Play out turns until ten turns are up (solo) or someone wins (against other people)

### Turn format

- Roll dice
- Play out circumstances indicated for the numbered event (see below) with any modifications that are granted based on your character's abilities
- Move your character the appropriate number of spaces (you may have to move forwards, backwards, or in some cases remain stationary) based on what the circumstances of the numbered event are
- Pass dice to next player (go clockwise) if playing against other people or end your turn and start next turn if you are playing solo
- Keep playing until the game ends

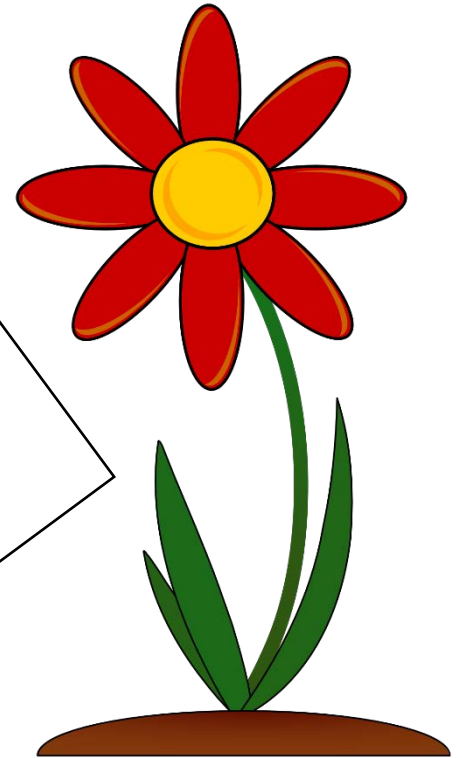
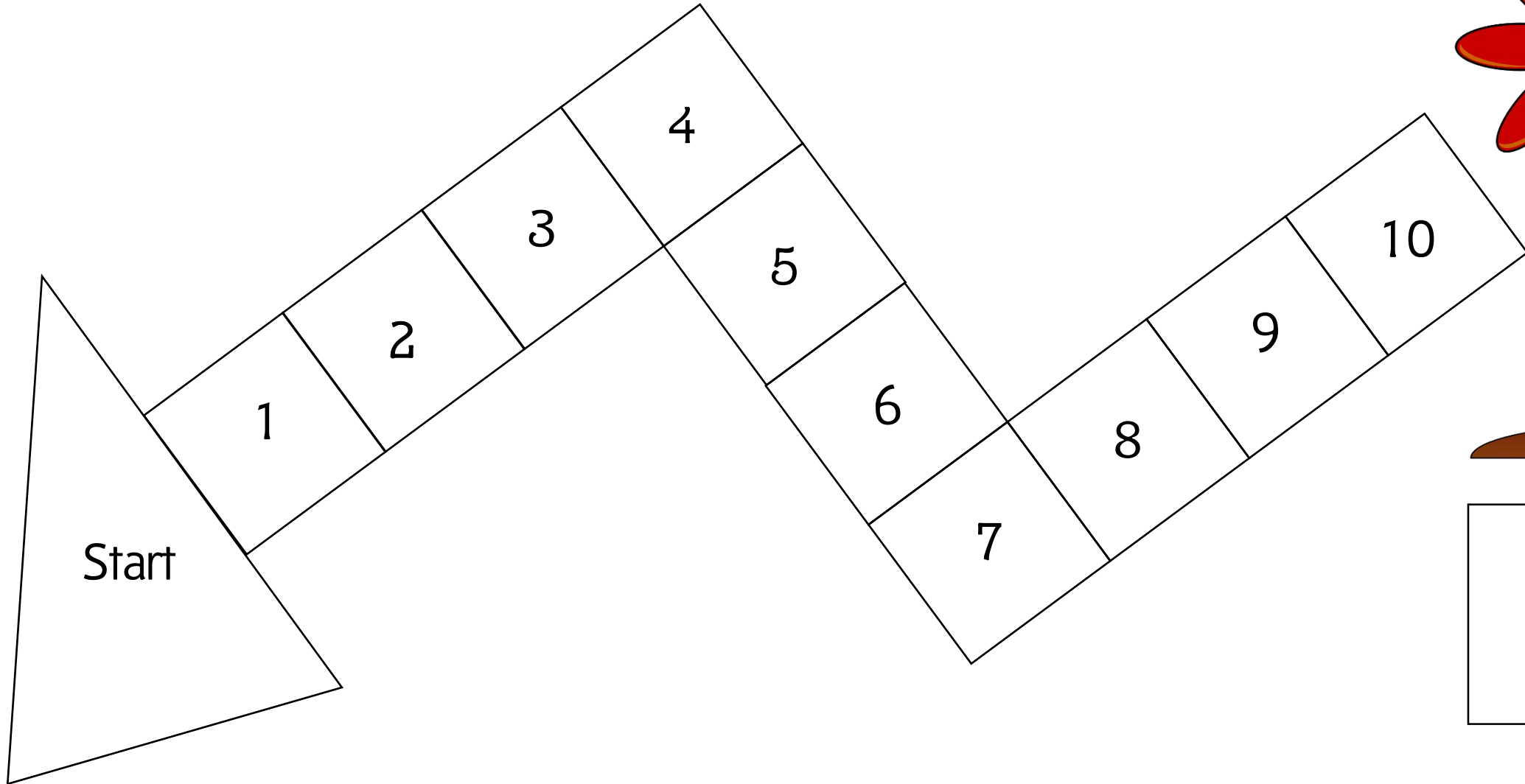
### Numbered Events

The numbers correspond to the numbers on the die

- 1) A warm spring causes many flowers to bloom (this happens in the daytime). Move forward two spaces on the board.
- 2) Predators are abundant this year, but hungry (this happens in the daytime)! They attack...Roll die to escape, if you roll a three or higher, you escape- remain stationary. If you roll a one or a two, you are depredated on ☹️. Go back to the Start.
- 3) The perfect conditions align for night-blooming flowers (this happens at night). Move forward six spaces.
- 4) A conservation organization builds a pollinator garden, preserving habitat for you (this happens in the daytime). Move forward two spaces.
- 5) A late season frost kills emerging flowers (this happens both during Day and Night). Move backwards one space.
- 6) A successful campaign raises money to support buying new land to conserve for pollinators (this happens in the daytime). Move forward one space.



# Pretend Pollinator Play Game Board



End:  
Pollination  
Success!

# Flower and Bee Craft

## Materials:

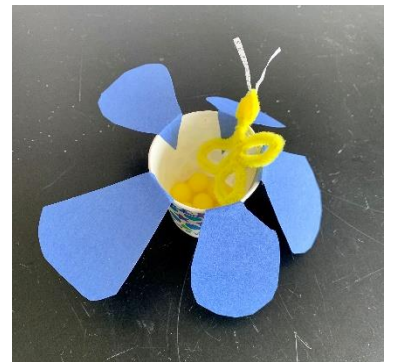
- Paper cups
- Cut construction paper (flower petals)
- Yellow pom-poms
- Glue stick
- Crayons or other drawing implement
- Pipe cleaner
- Paper shred

## Instructions:

Create your own flower and bee pollinator! Photos below are an example.

### For the flower

- Glue the cut construction paper pieces onto the paper cup. Feel free to make designs on your petals with the crayons. Fill the cup with yellow pom-poms, you now have a flower with pollen!



### For the bee

Make a small loop at the end of your pipe cleaner (the size of a pom-pom). Place the paper shred and pom-pom into the loop and twist until tight. This is the head. With the rest of the pipe cleaner, twist to make wings and a body. Be creative!

